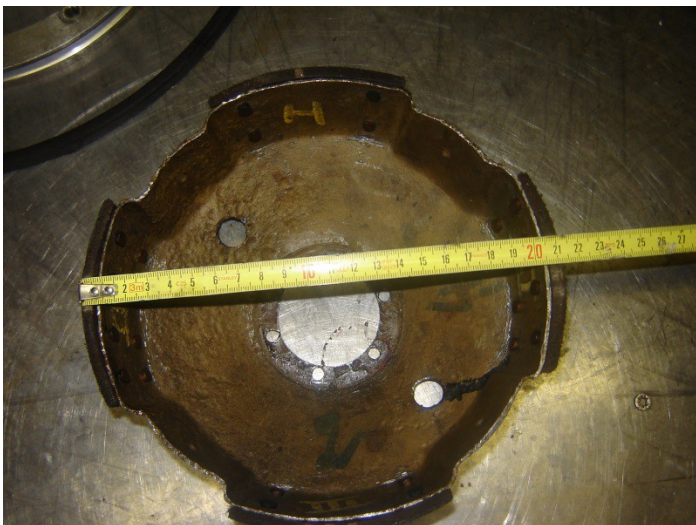


Peugeot bebe 1913 manual parts and more

Clutch plate / disk



Outer diameter 180 mm



Inside diameter 210 mm

inside diameter hole under side 53 mm

stitch off the bolt holes 63 mm

bolt holes 6 x 5 mm

bolts m5 x 20 mm



Clutch plate/disk height = 78 mm



Lining sizes conical Above size 77 mm

below size 92 mm thickness 5 mm

lining to remove the link's plate must first be removed the drive shaft (see specs drive shaft), then remove the bolts of the clutch in a country house there from 8 bolts (see specs at outerhouse) only then can the link be removed via the plate just above the side push the compression spring slightly inward so that you get a little more space and place as far as possible, the country house forward. And then he can just through caution if the central core of the shaft extracted word then watch the ring that CAMES (see specs Middle core)